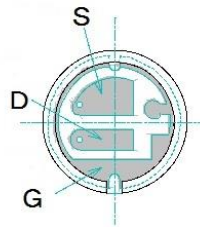




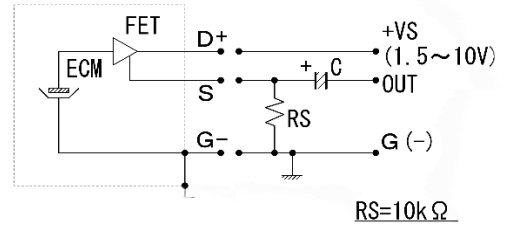
Back Electret Condenser Microphone Unit

EM-10UD



CIRCUIT DIAGRAM

TEST CIRCUIT



$R_S=10k\Omega$

SPECIFICATIONS

RoHS II

Type	Back Electret Condenser
Directivity	Uni-Directional
Sensitivity	$-43dB \pm 3dB$ (0dB=1V/Pa, 1kHz)
Frequency Response	50~20,000Hz
Maximum input Sound Pressure Level	128dB S.P.L (at 1kHz T.H.D. 1%) $V_{cc}=3.0V$
S/N Ratio	62dB Typical at 1kHz (1Pa, A weighted network)
Impedance	$1.2 k\Omega \pm 30\%$ at 1kHz ($R_s=10k\Omega$)
Rated voltage	3V
Operating voltage	DC : 1.5V~10V
Current Consumption	0.5mA max ($R_s=10k\Omega$, $V_{cc}=3.0V$)
Output terminal	3 terminals
Finish	Aluminum case
Dimensions	$\phi 10.7 \times 10.5$ mm
Weight	1.4 g

FREQUENCY RESPONSE

