

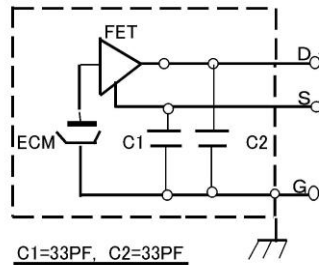


Back Electret Condenser Microphone Unit

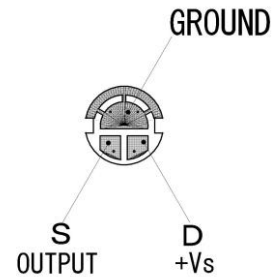
EM-17UE



CIRCUIT DIAGRAM



C1=33PF, C2=33PF



SPECIFICATIONS

RoHS II

Type	Back Electret Condenser
Directivity	Uni-Directional
Sensitivity	-42dB ± 3dB (0dB=1V/Pa, 1kHz)
Frequency Response	50~20,000Hz
Maximum input Sound Pressure Level	130dB S.P.L. (at 1kHz T.H.D. 1%) Vcc=5.0V
S/N Ratio	68dB Typical at 1kHz (1Pa, A weighted network)
Impedance	580 Ω ± 30% at 1kHz (Rs=10k Ω)
Rated voltage	5V
Operating voltage	DC : 1.5V~10V
Current Consumption	0.5mA max (Rs=10k Ω, Vcc=5.0V)
Output terminal	3 terminals
Finish	Aluminum case
Dimensions	φ 17.2 × 29 mm
Weight	≒ 5.0 g

FREQUENCY RESPONSE

