

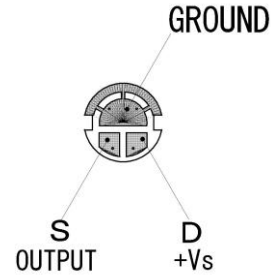
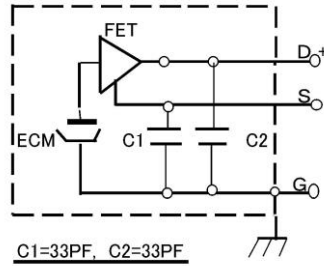


Back Electret Condenser Microphone Unit

EM-14UE



CIRCUIT DIAGRAM



SPECIFICATIONS

RoHS II

Type	Back Electret Condenser
Directivity	Uni-Directional
Sensitivity	-42dB ± 3dB (0dB=1V/Pa, 1kHz)
Frequency Response	50~15,000Hz
Maximum input Sound Pressure Level	128dB S.P.L (at 1kHz T.H.D. 1%) Vcc=5.0V
S/N Ratio	68dB Typical at 1kHz (1Pa, A weighted network)
Impedance	600 Ω ± 30% at 1kHz (R _s =10k Ω)
Rated voltage	5V
Operating voltage	DC : 1.5V~10V
Current Consumption	0.5mA max (R _s =10k Ω, Vcc=5.0V)
Output terminal	3 terminals
Finish	Aluminum case
Dimensions	φ 14 × 24 mm
Weight	2.7 g

FREQUENCY RESPONSE

